



EAST WOLDS

COMMUNITY NEWSLETTER

DECEMBER 2025–JANUARY 2026



LOCAL NEWS AND 'WHAT'S ON' GUIDE SERVING:
Burton Fleming, Butterwick, Foxholes, Kilham, Langtoft,
Octon, Rudston, Swaythorpe, Thwing, and Wold Newton.

THOUGHTS FROM OUR FRIEND

Dear Reader

I hope this finds you well! Have you got your sprouts on?

Here we are hurtling towards another Christmas, where has this year gone!

Suddenly the shops are full of Christmas cheer, is the piped music driving you mad already and I'm sure there are people hell bent on buying up the last packet of dates (with the little fork), that mostly get thrown away in the new year, Auntie Mary is the only person that likes them and she only eats one or two!!

As I've got older, I've realised that I don't much like the excess of Christmas, too much food, too many presents, too much money, too much competition. How many times have you heard people say...'Christmas isn't like it used to be'

For me it certainly isn't, its hard to create the days when family Christmases used to consist of just being together, making instruments and having a sing song, playing games and sharing a meal and a few presents in a pillowcase.

I think its important to remember that for some it is the time of year when the stress of it all becomes too much and being able to afford presents, food, being able to keep the house warm, missing the people no longer with us, it can be a heavy time.

Although I'm not a religious person, I started to feel that for me the best part of Christmas is the giving of your time – helping someone out, making sure that people aren't alone if we can and being together with friends and family is everything. That giving someone a gift of something that they don't want or even like isn't necessary. Anyway, what do we really need?

Let's take the pressure off. Does it matter if we don't have four choices of meat and a nut roast just in case? Does it matter if our gifts are homemade and didn't cost a fortune?

Anyway, deck those halls, remember to watch Auntie Mary with that sherry bottle and most of all, take it all in, sing a few songs, play games and if someone invites you say yes, if you want to. If someone is on their own, check they're okay.

Let's think about how we can include people, be kind, slow down and not worry, not just for Christmas, but all year round. Think about presence and not presents.

Sending you all the very best and warmest of wishes



A QUICK MESSAGE FROM US

Season's Greetings to All!

We hope you're keeping warm and cosy as we head into the festive season. This edition is a bumper one, covering both December and January, so our next issue will be with you in February. In the meantime, please keep your contributions coming – your support is what makes our community newsletter so special.



A heartfelt thank you goes to:

- **Al Best and The Thwing & Octon Amenities Group** for their generous donation and for always hosting a fantastic quiz in support of the newsletter.
- **Foxholes with Butterwick Parish Council** for their kind donation towards our printing costs.
- **Our amazing volunteers** who take time out of their busy lives to deliver our newsletters to your homes.

Producing the *East Wolds Community Newsletter* this year has been an absolute pleasure, and we've been overwhelmed by the encouragement and generosity of our community. Thank you to everyone who has helped in so many ways – we couldn't do it without you. **You can download the previous issues we have produced from our website at www.halo-graphic.com**

Wishing you all a very **Merry Christmas and a Happy New Year**. We look forward to continuing to make our newsletter bigger and better in 2026!



Facebook: facebook.com/EastWoldsCommunityNews



Email: eastwolds@outlook.com



or call Sarah direct on **07799 293162**



Sarah & James





COFFEE MORNING

**Saturday 10th January
10am to 11.30am.**

**FOL Coffee Mornings take place on the 2nd Saturday of the month.
Please note there is no Coffee Morning in December.**



**Please come along and join us in
The Church Rooms, Church Lane, Langtoft.**

**We do toasted teacakes, crumpets and cakes,
tea, coffee, cappuccino and juice for the children.**

ADVERTISE WITH US!

The continuation of the **East Wolds Community Newsletter** depends upon the support of advertising. The Newsletter is the ideal place to promote your business, as well as your event, group or venue. The rates are:

**Half page horizontal:
£20 + VAT**

**Full page:
£35 + VAT**

**Back cover:
£45 + VAT**

Every individual or business who would like to book an advert will be offered the opportunity to have it **designed professionally at no extra cost**, to ensure your advertisement looks as good as possible and suits the style of the newsletter.

Special Offer! Get a 10% discount on your advert if you pay for a three month run, and a 15% discount if you advertise for six months.

We will also place an event as part of our "What's On roundup" listing free of charge. Simply send us the date, time, event and venue details.

Don't forget to follow us on Facebook! We are more than happy to also promote any news or events on the **East Wolds Community Newsletter Facebook** page. Simply follow the page for updates and please feel free to comment on the posts.

Find us at www.facebook.com/EastWoldsCommunityNews

Previous issues can be downloaded from www.halo-graphic.com/eastwolds



WOLD TOP

**GREAT BEER IS
OUR NATURE**

EXPERIENCE OUR BEER WHERE IT'S BREWED

Nestled on the stunning Yorkshire Wolds, Wold Top is more than just great beer, it's an experience. From brewery tours, to live music evenings, theatre and sporting events – every event is a chance to discover what makes Wold Top so special. Whether you're a beer lover, a countryside explorer, or just curious - our events are brewed with you in mind.

Hunmanby Grange, Driffield, YO25 3HS

www.woldtopbrewery.co.uk

01723 892222

f woldtopbrew



WOLD NEWTON COMMUNITY CENTRE



Mondays 1:30-3pm
Weekly line dancing for beginners & improvers

Tuesdays 10-11am
Weekly Tai Chi

Thursday 4th December
Christmas Quiz

Thursday 8th December
Quiz

Saturday 31st January
Coffee Morning

WANT TO HIRE OUR SPACE?

Party, meetings or perhaps you can bring a class or an event to Wold Newton?

Small hall £5 an hour, large hall £6 per hour.
Both halls combined are £11 p/h plus any electricity used at £0.40 per unit

• Two halls • Kitchen • Baby changing facilities • Bouncy castles welcome

Everyone is welcome!

To book or for enquires please call Judith on 01262 470368

LANGTOFT NEEDS YOU!



VOLUNTEERS NEEDED TO JOIN WORKING GROUP

to discuss what you want for next year's Village summer fayre in Langtoft. We need your support and your ideas. Without additional help, we are unable to continue with the event next summer.

Everyone welcome

Please join us at Maggie's, Valley View (next to playground)
Thursday 4th December 7.30pm or contact Mike - 01377 267602

DRIFFIELD SILVER BAND



The Driffield Silver Band rehearse at Nafferton Village Hall every Friday evening between 19:45 and 21:45. If you would like to listen to the band rehearsing, you will be most welcome, seats are provided at the front of the hall for anyone wishing to 'drop-in' for a listen.

Driffield Silver Band Upcoming Autumn/Winter Events:

Saturday 6th December, 2pm Driffield Methodist Church

A Christmas Concert for All. A free, family friendly event for all. Driffield Silver Band is joined by the Driffield Community Band and the Farmers Daughters vocal group for an afternoon showcase of local entertainment.

Saturday 13th December, 5pm Hornsea Floral Hall

'Tommy Trumpet Saves Christmas' – an original Christmas story as told by a

brass band. Tickets available online or from the Hornsea Floral Hall's own ticket office.

Monday 15th December, 7pm Bridlington Spa

Bridlington Lion's Charity
Christmas Concert.

Saturday 20th December, 2pm

Church of Ascension, Hull
A Festive Themed Concert with a Driffield Silver Band twist.

The band currently have a vacancy for a tenor trombone player. If you are interested in this position, please contact the band either via their website or by messaging their Facebook page.

For any further information about the band or any queries regarding booking the band, please take a look at our website and/or Facebook and Instagram.

The Driffield and East Riding Community Band

The Driffield and East Riding Community Band (previously branded 'The East Riding Youth Brass Band') rehearses at Nafferton Village Hall every Friday evening from 18.00-19.15.

The band features players of mixed ages and varying abilities ranging from established players to complete beginners. Musical tuition is provided free of charge and instruments are provided on a free loan basis to all brass and percussion players. To find out more about joining the band, please contact musical director Graeme Appleton on 07747 122098 or band secretary Margaret Buckton on 07970 632638.

The band are currently looking for opportunities to expand their concert diary. If you have an upcoming event and would like the community band to perform, please contact either Graeme or Margaret on the mobile numbers above who will be happy to discuss these opportunities with you.



FOXHOLES EVENTS AND ACTIVITIES FOR DECEMBER/JANUARY 2026

REGULAR SOCIAL ACTIVITY GROUPS

Monday 1st December (Meeting Room)
AND
Monday 5th January 2026 (Meeting Room)
CAMERA CLUB 7.30pm till 9.00pm
(Every 1st Monday of Month)
Contact Sue: 07881 374805

Tuesday 9th December (Main Hall)
AND
Tuesday 13th January 2026 (Main Hall)
WHIST DRIVE 7.30pm till 9.30pm
(2nd Tuesday in Month)
WE WOULD LIKE TO HAVE MORE
MEMBERS TO COME AND PLAY WITH US
This is Social Progressive Whist, so,
Beginners welcome. Just come along
on the night.
Contact Rod: 07748 755607

Tuesday 16th December (Main Hall)
AND
Tuesday 27th January 2026 (Main Hall)
**YORKSHIRE COAST FARM
WOMEN'S GROUP**
(Last Tuesday in Month) but not
December 2025
Contact: lorrainegillings@icloud.com

WEEKLY SOCIAL ACTIVITIES GROUPS

Monday 1st, 8th, 15th December
(Meeting Room)
AND
Monday 5th, 12th, 19th, 26th January 2026
(Meeting Room)
CRAFT GROUP 2.00pm till 4.00pm
Contact Gill: 07748 908102
(Every week)

Wednesday 3rd, 10th, 17th December
(Main Hall)
AND
Wednesday 7th, 14th, 21st, 28th January
2026 (Main Hall)
LINE DANCING 7.00pm till 9.00pm
Contact Margot: 07902 293358
(Every week)

Thursday 4th, 11th, 18th December
(Main Hall)
AND
Thursday 8th, 15th, 22nd, 29th January
2026 (Main Hall)
ART GROUP 1.00pm till 3.00pm
(Every Week)
NEW MEMBERS WELCOME
Just come along to our meeting
and bring your Brushes & Materials

Thursday 4th, 11th, 18th December
(Main Hall)
AND
Thursday 8th, 15th, 22nd, 29th January
2026 (Main Hall)
SHORT MAT BOWLS 7.00pm till 9.00pm
WE ARE LOOKING FOR NEW PLAYERS!!
All welcome, beginners especially, all
equipment supplied. Please come and
have a go, this is Social Bowling!
Contact Peter: 07885 081993
(Every week)

Fridays
Vacant for Activities or Social Events
If you wish to book the Hall for any
other dates, then please contact Rod:
07748755607

SOCIAL EVENTS THIS MONTH

Saturday 6th, 20th December 2025
AND
Saturday 3rd, 17th, 31st January 2026
COFFEE MORNING 10.30am till 12.00pm
Contact:- See **FACEBOOK: Foxholes
Community Hall** (Every 2 x weeks)
All welcome: come and meet old or new
Friends in our comfortable surroundings.

Saturday 13th December 2025
FELLA'S AT FOXHOLES MEN'S GROUP
9.30am till 11.00am
(Coffee, Bacon Sandwiches and Convivial
Chat) £5.00 (Monthly)
Contact Rod: 07748 755607

Saturday 20th December 2025
'FOXHOLES PUB NIGHT'
(Christmas Party Night)
From 5.30pm till 11.00pm
Contact Ann: 077984765393
(Licensed Bar and Party Food)

Friday 6th December 2025
Private: Pupils Piano Concert
6.00pm till 8.00pm

Saturday 13th December 2025
Carols around the Tree @ Foxholes
Start:- 3.00pm Foxholes Village Green.
Then get together after at Foxholes CH for
Refreshment. (All Welcome.)
Contact: David Eddy 07469 929232
Saturday 24th January 2026
FELLA'S AT FOXHOLES MEN'S GROUP
9.30am till 11.00am
(Coffee, Bacon Sandwiches and Convivial
Chat) £5.00 (Monthly)
Contact Rod: 07748 755607

Saturday: 24th January 2026
'FOXHOLES PUB NIGHT'
(Games Evening Theme)
From 5.30pm till 11.00pm
Contact Ann: 077984765393
(Licensed Bar, plus Pie and Peas)

www.SOUTHFIELDSTORAGE.co.uk

CONTAINERS TO RENT

FLIXTON BRIDLINGTON WHITBY

01723 890 890

THE RECIPE BOOK

MINCE PIE COOKIE CAKE

I got this recipe from Facebook and I've started making it as an alternative to mince pies it's really delicious. It takes less than 10 minutes to put it together, and it makes such a nice change.

Ingredients:

225g plain flour
185g butter
100g caster sugar (plus extra to sprinkle on top)
1 tsp ground cinnamon
5 tbs mincemeat
1 Egg

Essential kit:

20cm non-stick cake tin (sponge tin),
cooling rack

Method:

Heat the oven to 180C
Beat the butter and sugar together until pale and creamy.
Add the egg and mix thoroughly.
Stir in the flour and cinnamon and mix until combined.
Grease a 20cm non-stick cake tin (sponge tin) before placing half the dough in the tin and spreading it evenly into the edges.
Place the mincemeat in a bowl and place in the microwave for a few seconds until hot. (This will make it easier to spread)
Place dollops of warmed mincemeat over the cookie dough in the tin and use the back of the spoon to spread an even layer.
Put the other half of the cookie dough on top and spread it evenly over the mincemeat.
Bake in the oven 180 ° for about 20-25 mins until light golden brown. Sometimes mine takes a little longer, I have no idea why.
Don't worry if it's still soft because it will harden as it cools, like a biscuit does.
Remove from the oven and leave in the tin to cool for about 5 minutes.
Carefully turn the cookie out onto a chopping board, before placing on a cooling rack.
Sprinkle the top with sugar and cut into wedges to serve!



Recipe courtesy of Ann Clark, Foxholes

MULLED WINE

Few things can get you into the festive spirit quicker than smelling the aroma of mulled wine permeating throughout a household. Here's a simple recipe for the ultimate Christmas tippie.

Ingredients:

1 lemon
2 oranges
8 cloves
2 cinnamon sticks
4cm (1.5in) piece ginger, peeled and sliced
60g (2½oz) light brown sugar
60ml ruby port
75cl bottle full-bodied red wine

Essential kit:

Large Pan

Method:

Remove the zest from the lemon and one of the oranges with a potato peeler in thin strips then juice the zested orange. Push the cloves into the remaining orange.

Put the zest, orange juice and clove studded orange in a large pan along with 2 cinnamon sticks, the ginger, sugar, port, red wine and 750ml (1 1/2 pint) water.

Put over a low heat and stir until the sugar dissolves, then turn up the heat slightly and simmer gently for 20 minutes.

Remove from the heat and leave to cool for 10 minutes before ladling into glasses. Garnish with orange and lemon slices and a cinnamon stick.



Farmer Christmas Tractor Run

Sunday 14th December

Leaving Wilfred Scruton at 3.30pm

Wold Newton 3.45pm

Hunmanby 4.20pm

Burton Fleming 4.50pm

Rudston 5.15pm

Kilham 5.45pm

Langtoft 6.15pm

Foxholes 6.50pm

Finishing GM Stephenson Ltd

No public access at the start or
finish business locations.

Timings are approximate.

Proud to support



YORKSHIRE
AIR AMBULANCE

Registered Charity No. 1084305



TEC

THOMPSON

EXTERIOR CLEANING

Traditional Window Cleaning Service

- Gutter Cleaning
- Soffits
- Conservatories
- Power Washing
- Driveways
- Patios

07376 676307



WOLDS VALLEY WOOD



QUALITY HARDWOOD LOGS

Builders bag £100

(plus possible delivery fee)

Small bags £5

Kindling £4

Call Mark or message directly

Small bags and kindling available
from the log store and honesty box
by the farm gate

Main Road, Weaverthorpe

07971 673829

Markwelford113@gmail.com

Facebook: woldsvalleywood

woldsvalleywood.co.uk

WHAT'S ON AT KILHAM VILLAGE HALL

Monday

Wolds' Crafters

Main Hall - 1.00pm to 4.00pm. The group leader is Mary Harris. (01377) 254172

Keep Fit Circuit Sessions - Main Hall - 7.00pm to 7.45 pm. Contact Alice Stark, Redefined Coaching.

Tuesday

Sapravarna Yoga classes

Main Hall - mornings (Term Time Only) from 9.15am to 10.30am.

The group leader is Mrs Helen Harris.
07813 66702
email: helenharrysoga@gmail.com

Womens Institute

Main Hall - second Tuesday of each month. Meetings are from 7.15pm to 9.00pm. Contact Christine Snowden
email: ces1951@hotmail.co.uk

Kilham Gardening Club

Main Hall - first Tuesday of the month, October to April. Meetings are from 7:30pm to 9:30pm.

Kilham Village Hall Trustees - Meeting Room - meetings 4 evenings a year from 7.30pm to 9.00pm.

Wednesday

Parents and Toddlers Playgroup

Main Hall - mornings from 09.30am to 11.15am. The group leader is Amy Clarkson
07500 069642

Tapestry Group

Meeting Room - held on the last Wednesday of each month from 10.00am to 12.00pm. The group leader is Sheila Littlewood (01262) 420381

All Saints Community Teas - held on the 2nd Wednesday of each month at 12:30pm
- all welcome.

Outreach Post Office - Meeting Room - from 1:00pm to 4:00pm

Keep Fit Circuit Sessions

Main Hall - 7.00pm to 7.45 pm. Contact Alice Stark, Redefined Coaching.

Knitting Group

Main Hall - evenings from 7:00pm to 9:00pm. The group leader is Jenny Gilmartin 07857 458342

Thursday

Indoor Bowls

Main Hall - October to March 2.00pm to 4.00pm. The group leader is Tim Marshall
email: bike1588@hotmail.com

Rainbows

Meeting Room - evenings from 6.00pm to 7.00pm. The group leader is Sue Dennis
email: sdennis917@btinternet.com

Brownies

Main Hall - evening from 6.00pm to 7.00pm. The group leader is Michelle Keyes.
email: kilhambrownowl@hotmail.com

Guides

Meeting Room - evening from 7.00pm to 8.00pm. The group leader is Claire Dennis.
email: clairebell2112@gmail.com

Rangers

Main Hall - evening from 7:00pm to 8:30pm. The group leader is Katherine Phipps. email: katephipps7@hotmail.com

Friday

Outreach Post Office - Meeting Room - from 9:00am to 12:00am

Sapravarna Yoga classes

Main Hall - mornings (Term Time Only) from 9.15am to 10.30am.
The group leader is Mrs Helen Harris.
07813 66702
email: helenharrysoga@gmail.com

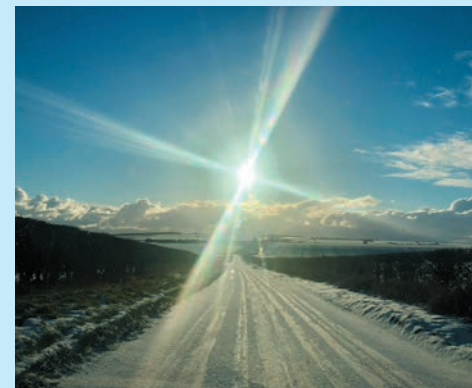
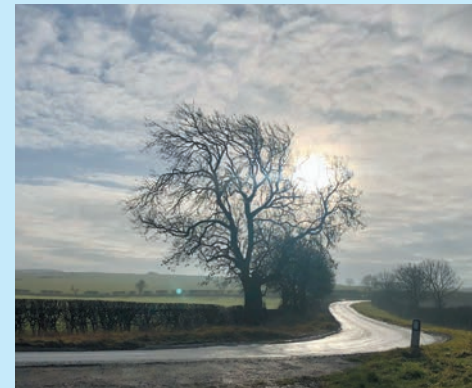
Saturday/Sunday

Available for private hire.

www.kilhamvillagehall.co.uk

WINTER WONDERS

While some people love the summer, the arrival of winter creates some truly beautiful moments, as captured in these wonderful photos taken by Rod Buckley of Butterwick.



THWING & OCTON PARISH COUNCIL NEWS

The next meeting of the Thwing and Octon Parish Council will take place on January 12th, 2026. Please note that there will be no meeting in December.

We are still actively seeking land to reinstate a children's play area in Thwing. If you know of any available land for rent, purchase, or potential donation/lease, please contact the Clerk as soon as possible. Your support in this project would be greatly appreciated by the community.

As we approach the festive season, we would like to extend our warmest wishes to all. Merry Christmas and all the best for a prosperous 2026!

Lastly, we are still seeking a member of the community to join the Parish Council. If you're interested in becoming more involved in local decision-making, we would love to hear from you. Please get in touch with the Clerk for more details.

Clerk: thwing.clerk@outlook.com

www.thwingoctonparishcouncil.eastriding.gov.uk

THWING CAROL SINGING



It is nigh on thirty years since Thwing Carol Singing was commenced. Over this period a large sum of money has been raised for the benefit of the village as well as the pleasure for everyone concerned. 'Age and infirmity' continue to take their toll and therefore it has been reluctantly decided not to continue with the Carol Singing. This does not preclude another group 'taking up the baton'. **Martin Dodgson**



HALOGRAPHIC

**Sarah and James proudly sponsor the
East Wolds Community Newsletter**

**DOES YOUR BUSINESS HAVE ANY PRINT NEEDS?
NEED SOMETHING DESIGNING?
PERHAPS WE CAN HELP!**

Halographic are a one-stop shop, providing hassle free design and print services for your business.

FLYERS AND LEAFLETS
BUSINESS CARDS
BROCHURES
ROLLER BANNERS
POSTERS
STICKERS AND LABELS
MENUS
APPOINTMENT CARDS
T-SHIRTS

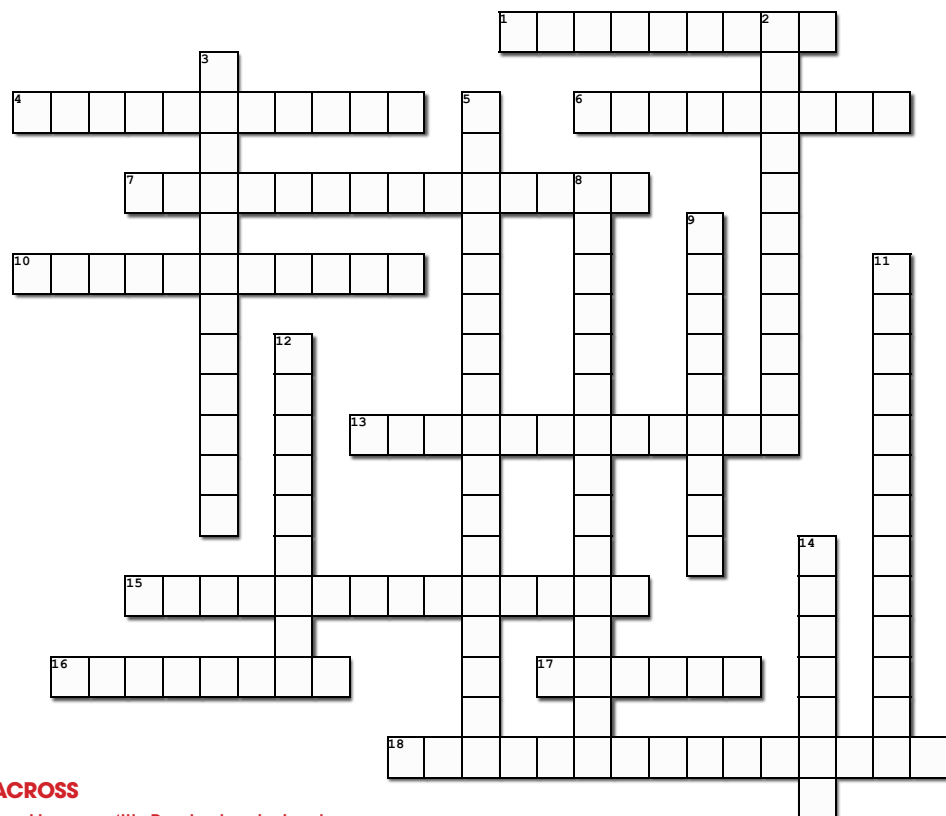
Full design service and printing as standard.
Delivered directly to your door at no extra cost.

Scan the code to visit our website!



THE PUZZLE PAGES

XMAS ENTERTAINMENT CROSSWORD. SOLUTION ON PAGE 38.



ACROSS

1. He sang 'It's Beginning to Look a Lot Like Christmas' (5,4)
4. Madcap star of 2003's 'Elf' (4,7)
6. Director behind 'The Nightmare Before Christmas' (3,6)
7. 1954 film with Bing Crosby (5,9)
10. He crooned about 'Chestnuts Roasting on an Open Fire' (3,4,4)
13. Romantic British Christmas film by Richard Curtis (4,8)
15. Upbeat seasonal song from Bobby Helms (6,4,4)
16. Comedy Christmas movie starring Bill Murray (8)
17. Creature that stole Christmas (6)
18. Animated movie about a magical train to the North Pole (3,5,7)

DOWN

2. All she wants for Christmas is you! (6,5)
3. Spanish phrase turned into a hit Christmas song (5,7)
5. Frank Capra's 1946 classic film (3,1,9,4)
8. Classic story from Charles Dickens (1,9,5)
9. 1990 Christmas comedy movie starring Macaulay Culkin (4,5)
11. Wham's Christmas classic (4,9)
12. Singer who was 'Rockin' Around the Christmas Tree' (6,3)
14. Action packed Bruce Willis film set during Christmas Eve (3,4)

WORDSEARCH - CHRISTMAS TIME

Can you find these 15 words associated with Christmas in the grid? They can go forward, backward or diagonally! Solution on page 38.

O	D	Z	S	K	I	B	O	I	F	V	W	V	H	X	U	F	Y	B	O
A	C	G	C	O	M	Y	E	E	G	M	C	A	R	O	L	S	X	Y	Y
K	D	D	T	Y	U	B	C	P	X	I	I	R	O	K	T	P	E	Q	C
A	S	X	E	I	Y	U	M	P	J	G	J	H	S	H	S	L	X	I	R
J	H	T	D	C	Z	G	R	H	B	K	O	W	G	Y	E	J	O	K	I
D	I	O	A	R	O	E	T	W	S	L	T	I	T	I	V	R	I	L	S
S	S	N	U	L	S	R	L	X	I	S	L	Z	Y	E	K	R	U	T	L
U	L	U	E	E	D	Q	A	D	F	D	G	R	B	N	D	I	I	D	A
R	T	L	N	C	A	B	A	T	S	C	U	N	B	Q	U	Z	D	N	I
V	U	T	E	L	D	Y	Q	A	I	H	E	J	L	V	W	J	N	C	C
Y	S	A	U	B	L	U	E	U	T	O	D	S	X	I	Y	J	A	K	E
B	Y	P	U	D	D	I	N	G	D	C	N	R	T	L	N	R	J	Y	P
D	P	S	G	P	N	F	E	J	B	O	H	S	X	U	D	U	J	L	S
U	O	F	I	R	D	A	L	J	R	L	T	Z	F	S	F	V	I	U	V
G	J	T	X	X	T	V	T	D	F	A	T	N	X	F	R	F	F	J	T
X	X	R	T	X	P	F	B	I	H	T	Y	J	L	R	G	P	I	I	I
V	V	V	A	E	V	O	P	U	V	E	F	O	F	D	X	K	X	N	E
C	M	B	X	H	Y	K	W	V	K	I	N	A	D	K	S	M	O	J	G
K	G	Z	C	S	Q	L	M	Z	Y	N	T	M	E	D	E	B	P	L	Y
P	K	C	S	N	O	W	I	C	H	P	I	Y	H	Q	S	U	N	D	B

YULELOG
TVSPECIALS
SNOW
CHOCOLATE
TURKEY

STUFFING
BELLS
PRESENTS
HOLIDAY
PUDDING

NATIVITY
DECORATIONS
LIGHTS
CARDS
CAROLS



After a full refurbishment, **The Falling Stone** reopened its doors on Saturday 25th October 2025, after being closed for 10 years or more.

The Falling Stone is your cosy country pub for real ale, hearty food, and warm village charm. Whether you're stopping by after a long walk or meeting friends by the fire, you'll always find a friendly welcome and a proper pint waiting. Drop in, slow down, and savour true country hospitality.

We will be supporting local hence we've gone with **Wold Top Brewery** and have fab introductory prices a pint of **Wold Top Bitter is just £4.00**, a large house wine **£5.50** for example. We have some fabulous **Filey Bay Whiskey**. We will also be using **Elston's butchers in Drifffield**.

We are currently open on **Saturday's from 4pm till 11pm** and **Sunday's from 12 till 5pm** (we both still have full time jobs).

We will have a small food menu, however for now we are offering a fabulous **Charcuterie Sharing Board for 2 at £19.95** and a daily specials, a main being **£9.95** and dessert **£5.00**.



Please follow our Facebook page for further info on food options.
Children & dogs welcome.

OUR CHRISTMAS OPENING HOURS WILL BE:

Christmas Day: 12 till 3pm
Boxing Day: 12 till 10pm
Sat 27th & Sun 28th as normal

CLOSED TILL NEW YEARS DAY

New Years Day: 12 till 10pm - no food
Sat 2nd & Sun 3rd open as normal - no food



CAROLYN'S GARDEN TIPS

Lurking In The Garden...

Well, we're all soggy now & the weather is turning colder, but we can still enjoy the odd crisp, bright day in the garden - it's good for the soul & the body. Please don't rush to clear up everything in sight in the garden, think about insects & animals that may be hiding away; a small hollow stem or a pile of leaves could be a welcome haven for them, even tucked behind the shed if you like things neat. Be especially careful if having bonfires to burn rubbish, spread the leaves or whatever out first for a few days, so any beasties can escape elsewhere.

Bug hotels are great things for children to make (no batteries or screens involved either) & can be made indoors on inclement days with little equipment or supplies. Making sure that wildlife has access to water during frozen periods is essential also. Not everyone feeds birds & may fear rodent issues, but you could always hang fat balls or feeders away from the house in woodland or hedgerows perhaps. A local lady who had a stall at Foxholes Craft fair sold willow feeders for fat balls that look lovely (my Mum made a dried flower arrangement with hers instead...what can you do???).



If you have a garden pond with fish in, think about keeping it from freezing over so the fish get oxygen still, using a floating ball for instance.



The individual tastes for garden styles do vary, but whatever yours is, find or make room to look after wildlife.

P.S. At Christmas, keep your Poinsettia in a warm place, not a window sill that gets cold at night. Don't over water it either. It is a species of Euphorbia from warmer climes, so treat it more like a cacti or succulent.

REDGATE GARAGE AT RUDSTON

SALES • SERVICE • REPAIRS

GET IN TOUCH FOR ALL YOUR VEHICLE NEEDS

BRAKES

BATTERIES

TYRES

STEERING

SUSPENSION

EXHAUSTS

AIR CONDITIONING

MOTS ARRANGED

FOUND IT
FINANCE IT?

FINANCE
OPTIONS
AVAILABLE
ON SALES
CARS

📞 01262 421809

Middle Street, Rudston, YO25 4UF

redgategarage.co.uk

Find us on  @redgaterudston

The Anvil Arms free house

BRIDLINGTON ROAD, WOLD NEWTON, DRIFFIELD, YO25 3YL

3rd December - Quiz Night



CHRISTMAS PARTY NIGHT!

December 13th 7pm- 11pm
Mick Britton DJ



14th December - Tractor Rally

North Wolds Santa Arrival ends at The Anvil Arms

Cask Ale • Lagers • Food Coming Soon!

Find us on Facebook: 'The Anvil Arms 25' or call 07802 466606

A very warm welcome awaits you from Neil, Karen & Chantelle.





#LINEINTHECHALK

A planning application has been submitted to **drill straight through a principal chalk aquifer**, north of Butt Lane, Foxholes, which is a **vital source of clean drinking water for 900,000 people** across the region, all in the search for gas.

Here are just some of the reasons we've said NO:

1. **Protecting our water & food security**
2. **The precautionary principle — don't risk what you can't replace**
3. **Threats to the rare chalk stream, the Gypsy Race**
4. **Public health concerns (toxic gases, dust, noise)**
5. **Noise and light pollution disrupting rural life**
6. **Traffic & safety risks from heavy lorries**
7. **Damage to farmland, soils, and biodiversity**
8. **Risks to our countryside and tourism economy**
9. **Seismic uncertainties**
10. **Conflicts with planning policy & climate obligations**

Contact your councillor/MP. Let them know our community says NO.
Contact Yorkshire Water to express your concerns. Draw a **#LineInTheChalk**

Foxholes Gas Drilling Application Latest News:

1. Great news that we have the support and objections from our fellow Wolds villages: Wold Newton, Weaverthorpe, Ganton, Langtoft, Thwing & Octon, Willoughby & Staxton and Burton Fleming Parish Councils. If your village is not listed here, there is still time to object, please encourage your PC to do so.
2. Still no sign of support from Scarborough, Bridlington or Filey Town Councils, our MP or Ward Councillor (Foxholes). So disappointing.
3. The "official" consultation period for submission of objections has ended. BUT...North Yorkshire council will keep accepting comments. So if you have submitted your objection already - thank you! Now you can work on friends and family to do likewise, please! If you haven't submitted your objection yet, please do so as soon as possible! Please encourage anyone you know to object too! The number of objections is up to 450 and rising.
4. In addition to our consultation response, Foxholes & Butterwick Parish Council has submitted 3 additional objections. If you have already objected, you can still submit additional comments or objections to:
planning.control@northyorks.gov.uk
5. Foxholes & Butterwick Parish Council and Wold Newton Parish Council formally requested that North Yorkshire Council Strategic Planning Committee members undertake a site visit, before any decision is taken. That will be a big opportunity for us, IF they agree to it.
6. Next up will be the Environment Agency consultation on Egdon's permit requests. This will include an open event at Foxholes Community Hall in December. Date is TBC.
7. The official opposition campaign (endorsed by Foxholes & Butterwick Parish Council) 'Drawing a Line in the Chalk', can be found on Facebook. Please give us a follow and encourage others to do so.

"Drawing a Line in the Chalk" is our opposition campaign's rallying cry. It expresses something deeply rooted, a commitment to the land itself. The chalk landscape around Foxholes isn't just a geological feature, it's a living part of the community's identity. To draw a line in the chalk was to declare, this is where we protect what matters.

The line drawn in the chalk is more than a metaphor. It marks the point at which a small rural community stood up, not only for its environment but for its right to be heard. In doing so, 'forgotten' Foxholes should now become part of a broader national conversation about how we balance energy needs, environmental limits, and democratic participation, particularly locally.

It is a community that has woken up, spoken up, and shown what happens when everyday people decide they will protect the ground beneath their feet.

Please help by encouraging everybody to join our Facebook group so we can spread the word even further!

Fun Village Quiz

& Raffle

First Thursday of every month

From 7:30pm

Wold Newton Community Hall, Front Street

Teams of up to 4 - £3 per player

Bring your own refreshments

Donations of raffle prizes gratefully accepted

A Thwing & Octon Amenities Group event

Raising funds for the East Wolds Community Newsletter

DID YOU KNOW?

With *The East Wolds Community Newsletter* covering a variety of villages, Adam Kelly decided to investigate the various areas for interesting facts - this issue he looks at Thwing and Wold Newton.

THWING

- There was often a low turnout in some East Riding village schools. According to one story, a new master arriving at Thwing on 27th February 1883 met three children in the morning and one in the afternoon. He hadn't been informed that the school had been closed for over a year.



- The All Saints Church clock is a rare type, fitted with a precision escapement. It was made around 1840 by James Harrison of Hull — a member of the same family as John Harrison, who invented the marine chronometer.

WOLD NEWTON

- In December 1795, a meteor blazed across the Wolds and crashed into fields on the edge of Thwing's parish. Locally, it made such an impression that a village pub was later named The Falling Stone in its honour. The story is explored in detail overleaf.

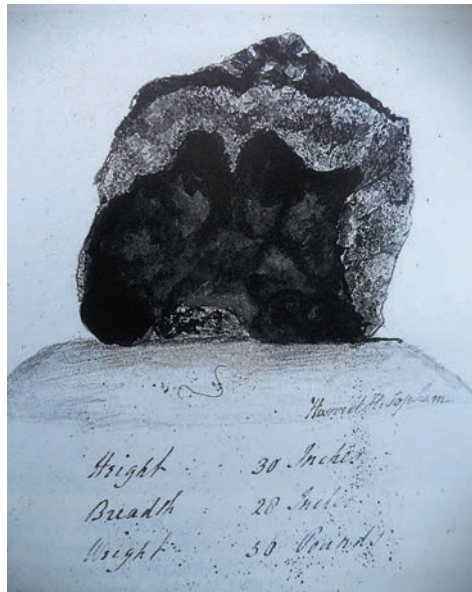


THE WOLD NEWTON METEORITE

At 3 o'clock in the afternoon on the 13th of December 1795, a day when the sky never got light, a double sonic boom shook the area near Wold Newton. An extraordinary stone fell from the grey sky – just missing the plough boy John Shipley who was then covered in earth.

The stone was hot and smoking and had buried itself 300 millimetres in the ploughed field. The falling stone was witnessed by at least 5 people, including two school boys playing in the vicarage garden. This was the very first time ever a meteorite had been seen coming down

to Earth and the first ever sonic boom experienced in the area.



The owner of the land was Major Edward Topham who had just bought the estate and was retiring from his London newspaper business back to his native Yorkshire. He had the stone dug out and brought into his kitchen. It initially weighed 25kg, but he chipped pieces off to send off to his newspaper colleagues to gain publicity. He also took sworn statements from all the witnesses.

He charged visitors 6d [2.5 pence] to view the stone, but later sold it to a professor in London for £10.50. It is now kept in the Natural History museum. It is still the largest meteorite observed to fall



Major Edward Topham



in Britain and the very first known to have landed in Britain.

Major Edward Topham erected a monument on

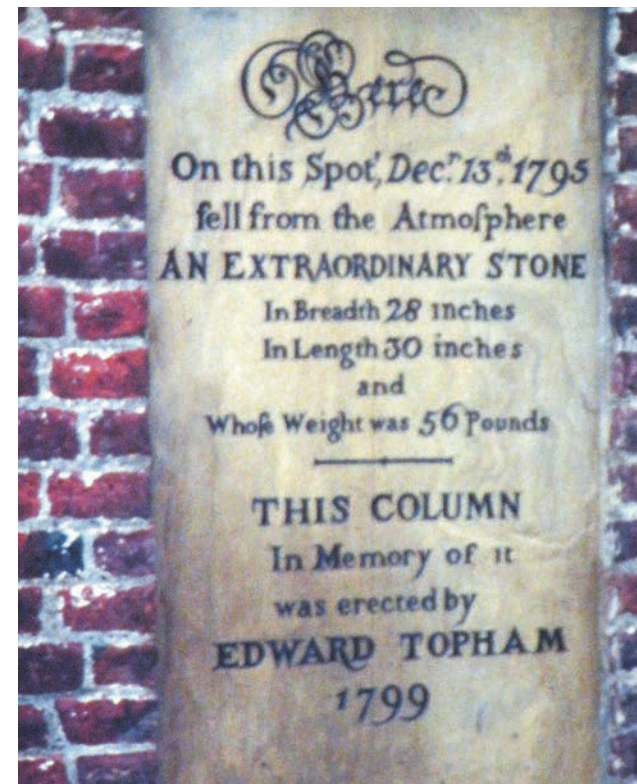
the exact spot where the stone landed near Wold Cottage, Wold Newton in 1799. Some years later, when John Shipley died, he was buried in the

church yard with a piece of the stone in his pocket. His headstone is still there near the church porch.

Over the years, the monument suffered in the weather and in 1995, I was brought in to restore the lettering on the monument, which reads:

"Here on this spot Decr. 13th 1795 fell from the atmosphere an extraordinary stone, in breadth 28 inches, in length 30 inches whose weight was 56 pounds. This column was erected by Edward Topham, 1799."

In 1995 the meteorite was brought back to the Wolds and I was a guest at the stone's 200th birthday party at Wold Cottage [it was really 4 million years old!] and I got to hold it in my hands whilst the police kept an eye on me .

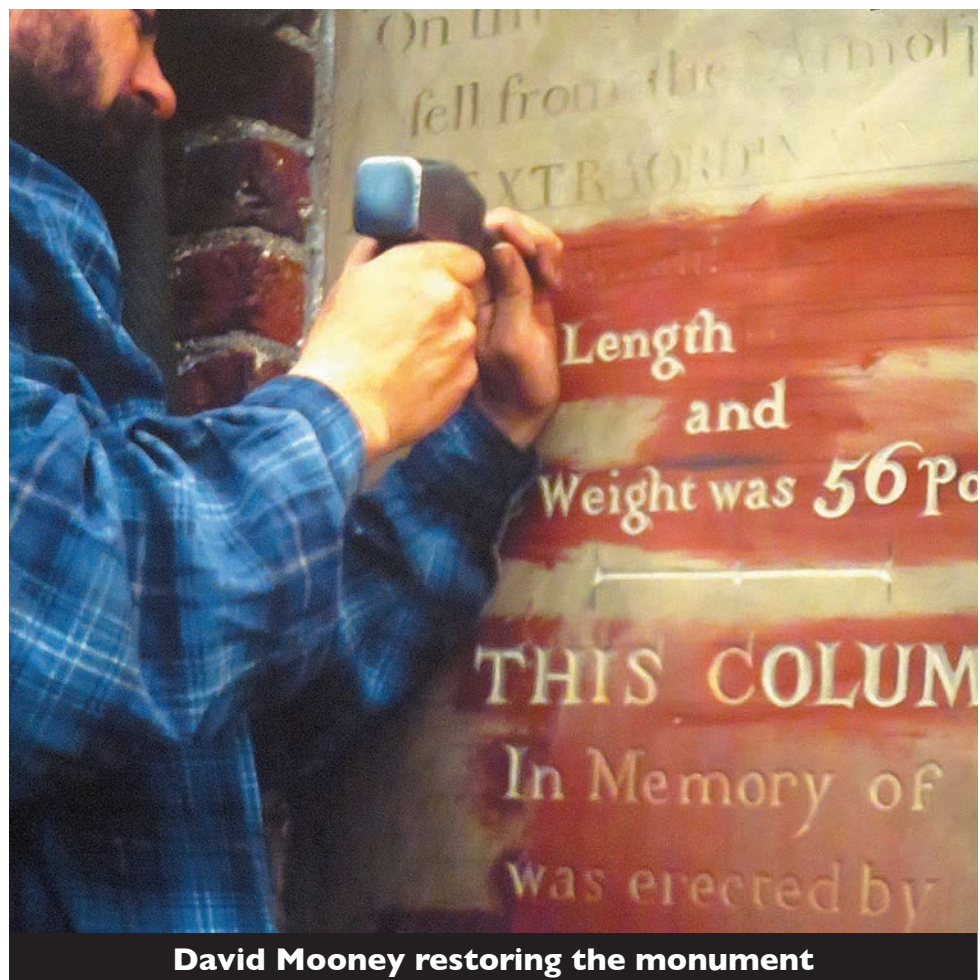


About 15 years ago a half hour Yorkshire Television documentary was produced with presenter Ian Clayton and I was interviewed throughout the program. We visited the monument and John Shipley's grave. Mrs Eileen Shipley, a direct descendent of John, shook my hand and said "you are the only man to ever to get Wold Newton on the telly!" I was very proud because my Grandfather was born in the village and he took me to see the monument when I was 7 years of age. We had no way

of knowing I would actually work on the column much later in my life!

Locally in Thwing a public house was named "The Falling Stone" and a local brewery brought out a bottled pale ale named after the meteorite. The monument is on private land and on a working farm and people are not allowed to visit without permission.

David Mooney



David Mooney restoring the monument



**Open 7 days a week
4pm until 10pm
01377 821020**

**Chalk Barn, Church Lane,
Langtoft YO25 3TN
www.langtoftpizza.co.uk**



We are a small firm based in the Yorkshire Wolds. We cover all aspects of ground maintenance and tree-work. We pride ourselves on offering a high quality service, with no job too small

Services We Offer

- ☑ **Commercial Mowing**
- ☑ **Hedge cutting**
- ☑ **Tree Maintenance**
- ☑ **Weed Control**
- ☑ **Firewood Sales**



**Contact Us
07541732545**

woldsgroundcareandmaintenance@gmail.com



**Find us on
Facebook**

COMMUNITY SPIRIT



Photo: Rod Buckley

Well, after a long and beautiful summer we have got the chaos of heavy snow in November. Listening to the news last night I heard of a long-standing free car park suddenly charging for parking and payment was only through an app on your phone. Is it progress? Is it inevitable? Are we being carried along on a tide of AI and new technology, that we must accept? What happened to freedom of choice?

Most of you reading this will be part of a village community. Most of you will have moved to your village through choice. Why? What were and still are your expectations? We live in villages with little or no facilities, no public transport, lack of resources. So, what holds us here? What makes our communities strong and supportive so that we feel that this is the best place on earth?

My answer? It's you. Each and every one of you. We all contribute into making our small communities our homes. Our strength is our community.

So, as we look forward to Christmas and a new year, I remember what we, as a small community have achieved this year, and what we look forward to achieving in the coming years.

As representative of Your Parish Councils, I thank all of you who have supported us in 2025 and I wish you all the best for the coming year, I welcome your views and ideas on supporting, growing and developing our communities. We are strong and resilient, and this is our home.

Sandra Morrison, The Grange Thwing.

FOXHOLES CHRISTMAS PARTY NIGHT

**Saturday 20th December 2025
5.30pm - 11.00pm**

**FOXHOLES COMMUNITY HALL
EASTFIELD, FOXHOLES. YO25 3QW**



Licensed Bar and Party Food



Contact Ann: 07798 4765393

FOXHOLES PUB NIGHT



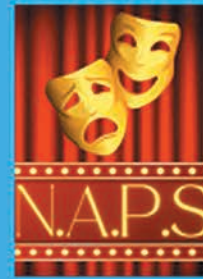
Saturday 24th January 2026
5.30pm - 11.00pm

FOXHOLES COMMUNITY HALL
EASTFIELD, FOXHOLES. YO25 3QW

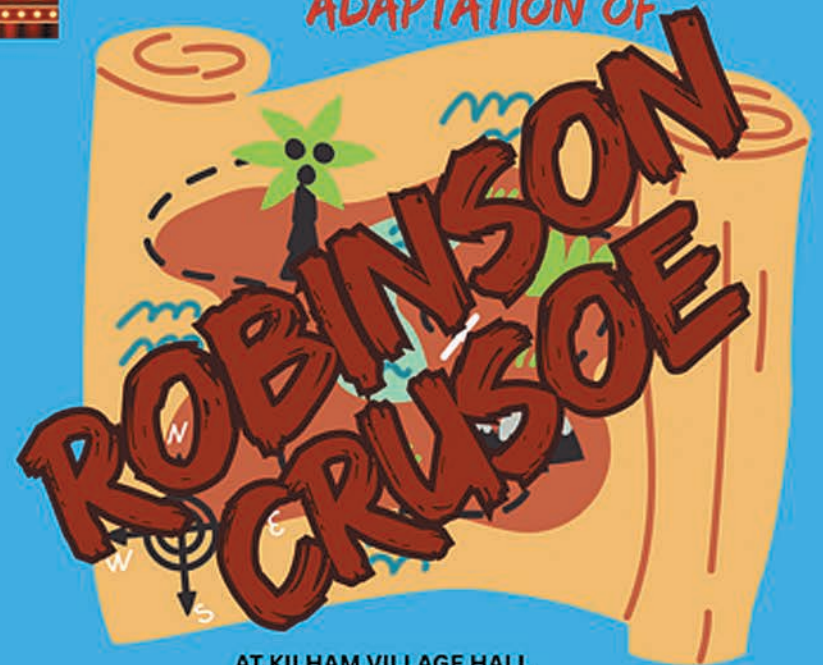
◆ ◆ ◆
Games Evening Theme

◆ ◆ ◆
Licensed Bar, plus Pie & Peas
£5 per person

◆ ◆ ◆
Contact Ann: 07798 4765393



NAFFERTON AMATEUR PRODUCTION
SOCIETY
PRESENTS.... A FUN PACKED FAMILY
ADAPTATION OF



AT KILHAM VILLAGE HALL

Saturday 17th January
at 4pm

Tickets £10 adults
£5 children (under 4's free)
Family of 4 £25 extra child £5 each

Tickets can be booked by contacting
Carol on 07354 301119
Looking for the treasure



 TOM WHALLEY
PANTOMIMES



LANGTOFT CHURCH ROOMS



COFFEE MORNING

Cakes & Bacon Butties

The last Saturday
of every month
10am to 11:30am

Church Lane, Langtoft,
Drifffield, United Kingdom

XMAS ENTERTAINMENT CROSSWORD SOLUTION:

ACROSS

1. Perry Como
4. Will Ferrell
6. Tim Burton
7. White Christmas
10. Nat King Cole
13. Love Actually
15. Jingle Bell Rock
16. Scrooged
17. Grinch
18. The Polar Express

DOWN

2. Mariah Carey
3. Feliz Navidad
5. It's A Wonderful Life
8. A Christmas Carol
9. Home Alone
11. Last Christmas
12. Brenda Lee
14. Die Hard

WORDSEARCH SOLUTION:

O	D	Z	S	K	I	B	O	I	F	V	W	V	H	X	U	F	Y	B	O
A	C	G	C	O	M	Y	E	E	G	M	C	A	R	O	L	S	X	Y	Y
K	D	T	Y	U	B	C	P	X	I	I	R	O	K	T	P	E	Q	C	
A	S	X	E	I	Y	U	M	P	J	G	J	H	S	H	S	L	X	I	R
J	H	T	D	C	Z	G	R	H	B	K	O	W	G	Y	E	J	O	K	I
D	I	O	A	R	O	E	T	W	S	L	T	I	T	I	V	R	I	L	S
S	S	N	U	L	S	R	L	X	I	S	L	Z	Y	E	K	R	U	T	L
U	L	U	E	E	D	Q	A	D	F	D	G	R	B	N	D	I	I	D	A
R	T	L	N	C	A	B	A	T	S	C	U	N	B	Q	U	Z	D	N	I
V	U	T	E	L	D	Y	Q	A	I	H	E	J	L	V	W	J	N	C	C
Y	S	A	U	B	L	U	E	U	T	O	D	S	X	I	Y	J	A	K	E
B	Y	P	U	D	D	I	N	G	D	C	N	R	T	L	N	R	J	Y	P
D	P	S	G	P	N	F	E	J	B	O	H	S	X	U	D	U	J	L	S
U	O	F	I	R	D	A	L	J	R	L	T	Z	F	S	F	V	I	U	V
G	J	T	X	X	T	V	T	D	F	A	T	N	X	F	R	F	F	J	T
X	X	R	T	X	P	F	B	I	H	T	Y	J	L	R	G	P	I	I	I
V	V	V	A	E	V	O	P	U	V	E	F	O	F	D	X	K	X	N	E
C	M	B	X	H	Y	K	W	V	K	I	N	A	D	K	S	M	O	J	G
K	G	Z	C	S	Q	L	M	Z	Y	N	T	M	E	D	E	B	P	L	Y
P	K	C	S	N	O	W	I	C	H	P	I	Y	H	Q	S	U	N	D	B

CHURCH FLOODLIGHTING SPONSORSHIP SCHEME 2026



ONLY £5 FOR ONE WEEK SPONSORSHIP

I wish to sponsor the lighting for the week which includes the following date/s
(weeks start on the Sunday of each week)

Please State How You Wish Sponsorship To Appear;

E.g. Private Donor

John Smith In Memory Of Mary Smith

To Celebrate John And Mary Smith's 1st Wedding Anniversary Etc

Your name:

Address:

Phone Number:

Email Address:

Please leave/send this form and the sponsor money at Middle Cottage, Main Street, Thwing, Drifffield, East Yorkshire, YO25 3DS. Please make cheques payable to "All Saints Church, Thwing PCC"
Or in the porch at Homeleigh Cottage, Main Street, Thwing, Drifffield, any further information please do not hesitate to call Chris Oxtoby on 07934479223



LW AUTOSOURCE

Quality Used Cars & Vans at Competitive Rates

Looking for a new vehicle or disposal of your old car?

LW Autosource is able to accommodate your requirements. We hold vehicle stock and specialise in sourcing vehicles directly for our customers. We can accommodate your specific vehicle requirements by sourcing vehicles using the latest and most powerful buying platforms for pretty much any vehicle in the UK whether it be a modern or classic motor.

Vehicles are:

**Fully checked
Inspected
MOT'd
Test driven
Valeted
Transferred same day
Delivery and Part exchange also offered.**

LW Autosource also offer a simple buy now trade disposal service for your old vehicle. This comes with no hidden fees and a no quibble service. Just a simple inspection, valuation and buy today offer, with payment same day.

Viewing of stock available to buy, by appointment.

Contact: **t.** 07950 717153 • **e.** lwautosource@outlook.com • **w.** www.lwautosource.co.uk

Based in Hunmanby, LW Autosource is working hard locally and nationally to provide quality vehicles that are perfect for you.



See what our customers say about us, by visiting our 5* Google reviews